

HP i-PAQ 500 Voice messenger – Tpad Guide



WiFi

When you turn on the Wi-Fi, your HP iPAQ automatically detects Wi-Fi networks that are broadcasting their signals.

1. Press **Start** > **Settings** > **Connections** > **Wireless Manager**.
2. On the **Home** screen, scroll and select **Wi-Fi** to open **Wireless Manager**.
3. Scroll and select **Wi-Fi** to turn Wi-Fi on.
4. After your HP iPAQ detects any existing Wi-Fi network, select the network you want to connect to and press **Connect**

You can add your Wi-Fi network to the HP iPAQ by using the Wifi configuration manager:

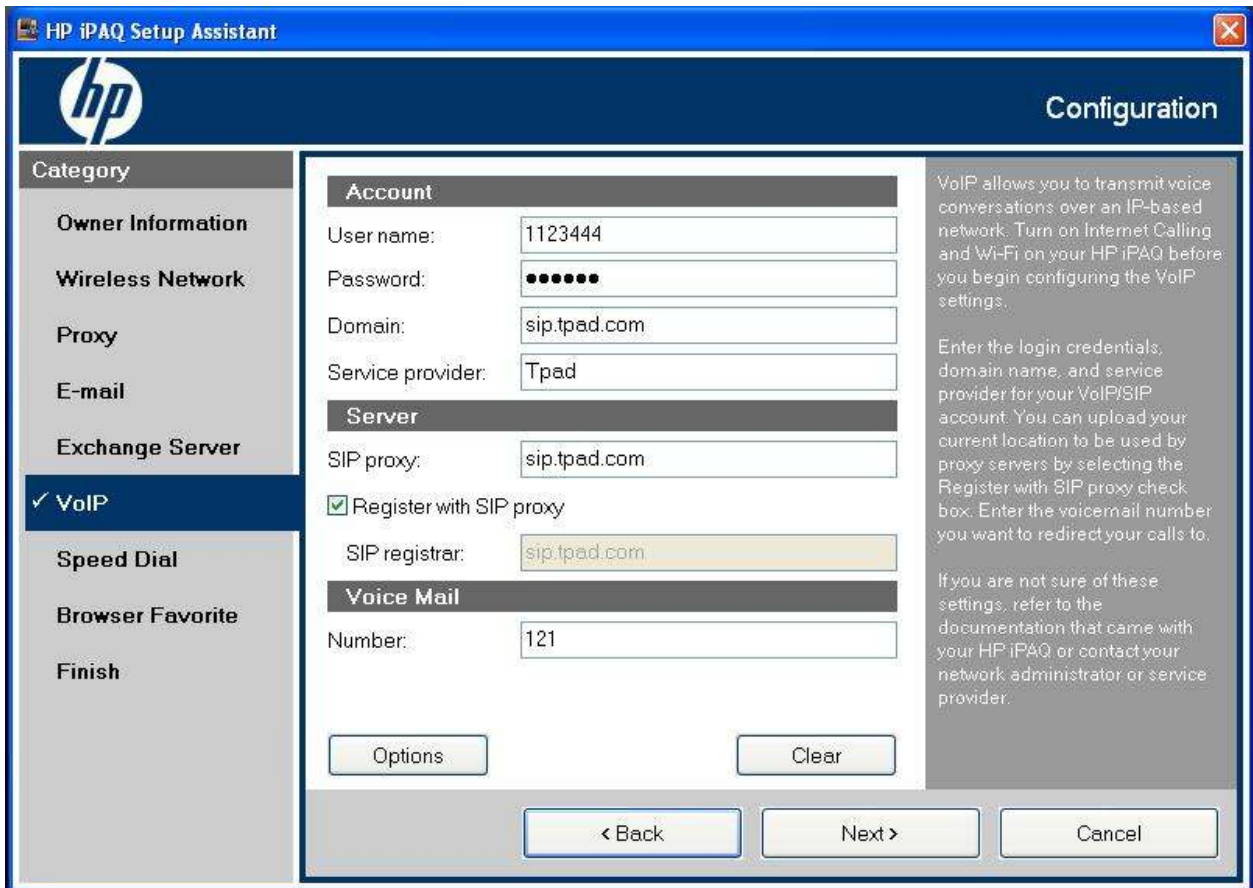
Press **Start** > **Settings** > **Connections** > **Wifi** > **New**

VoIP

1. Install the HP iPAQ setup assistant software on your PC or laptop
2. Connect your phone via the USB cable provided to your Laptop or PC.
3. Launch the HP iPAQ setup assistant software and click on **SETUP iPAQ**



4. Select **VOIP** from the menu



Fill in the settings as follows:

> Username : Enter your seven digit Tpad number **eg. 1123444**

> Password: Enter your Tpad account password

> Domain : Enter **sip.tpad.com**

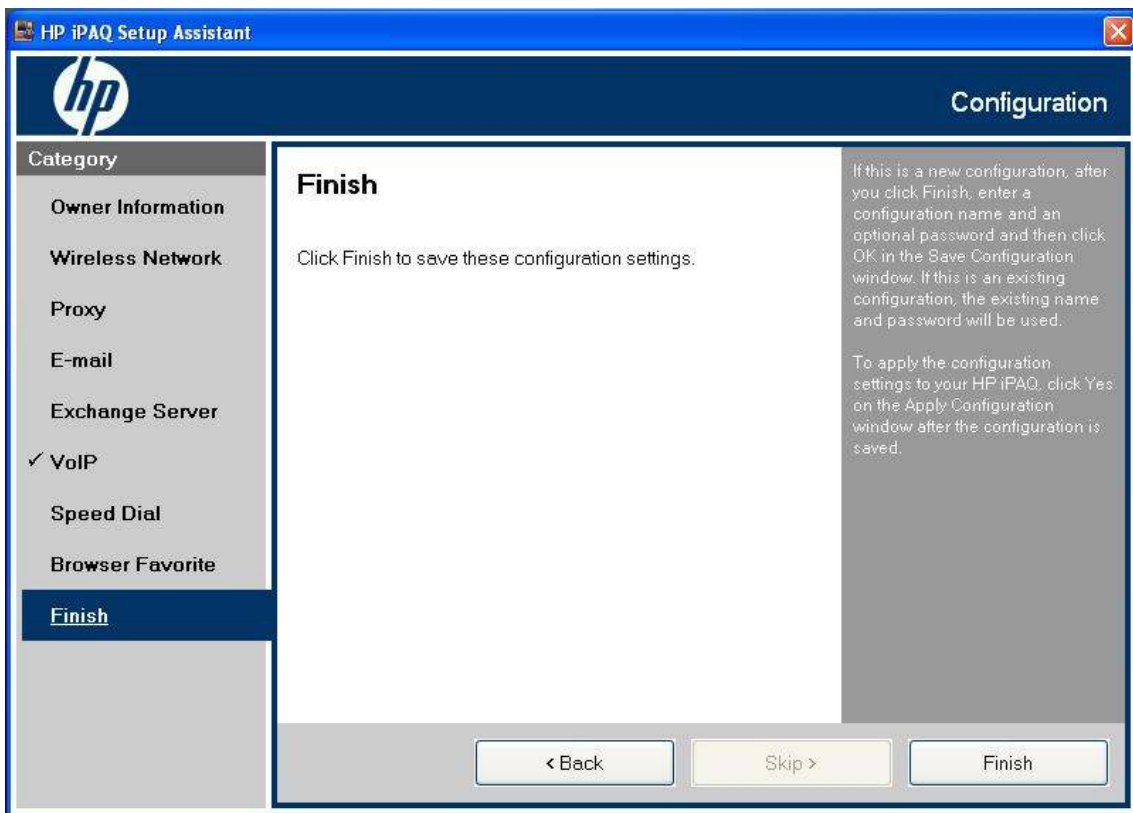
> Service Provider: Enter **Tpad**

> SIP Proxy: Enter **sip.tpad.com**

Ensure that “Register with SIP Proxy” is ticked.

> Voicemail Number: Enter **121**

6. Click **Finish**



Making VoIP/GSM Calls

You can make voice calls using VoIP and as well as normal GSM calls. VoIP routes voice conversations using an IP based network. VoIP to VoIP phone calls to any provider are typically free.

To make calls using VoIP:

1. On the **Home** screen, scroll to **Tpad**, which is off by default, and press the **Action** button.
2. Scroll and select the required option from the **Use Internet Calling** box.
3. You need to configure the Wi-Fi settings before you can use VoIP.
4. On the **Home** screen, the **Tpad** status changes to available or selected. If the status is “selected” then calls will be made using Tpad as default.
5. Use the keypad to enter the number you want to dial and press the **Send** key.

NOTE: On the **Home**, if the status of **Tpad** is **No Service**, it indicates that your HP iPAQ did not register with Tpad successfully.