

Senoa S1-681H Wifi Phone

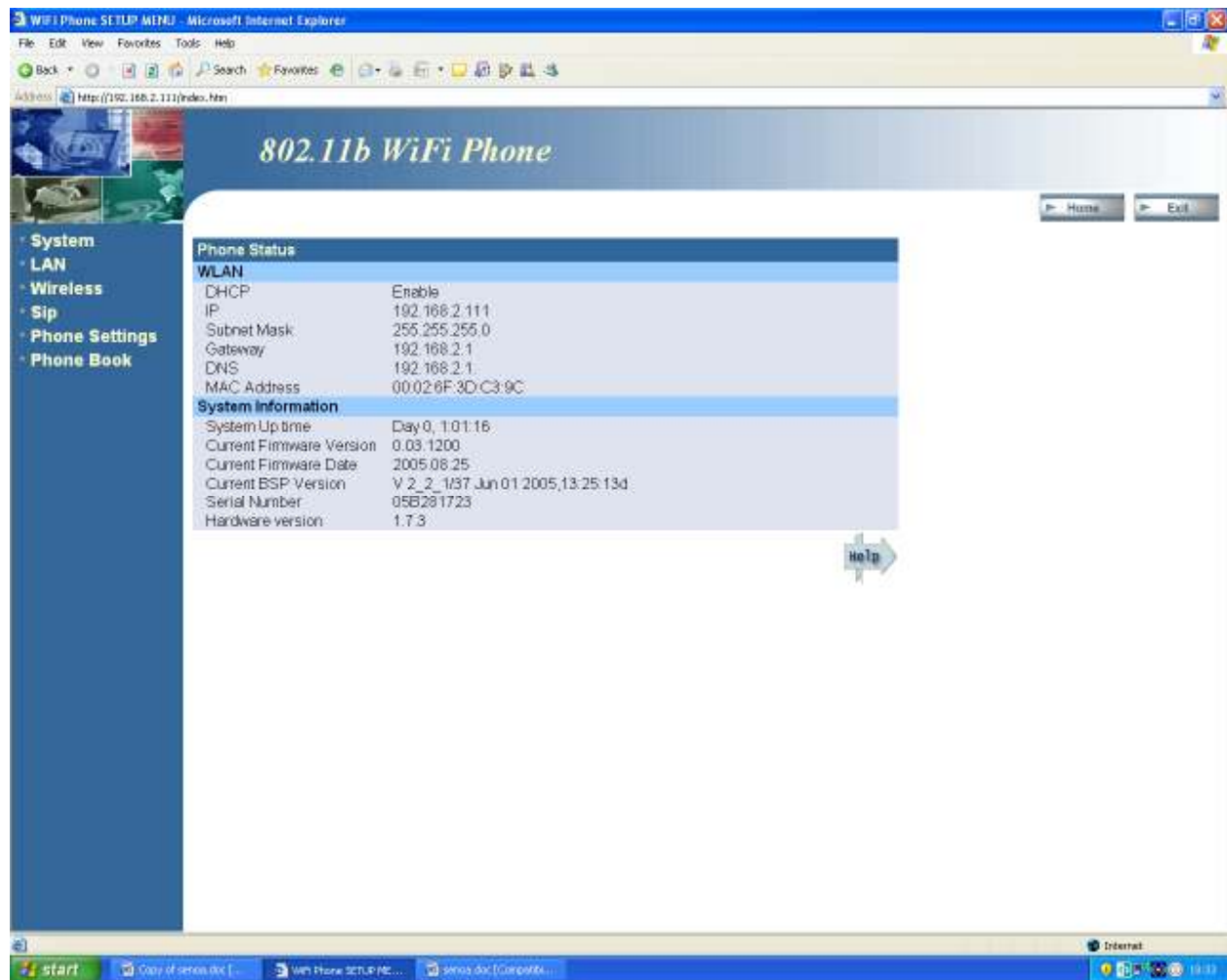


Setting up your Tpad Account

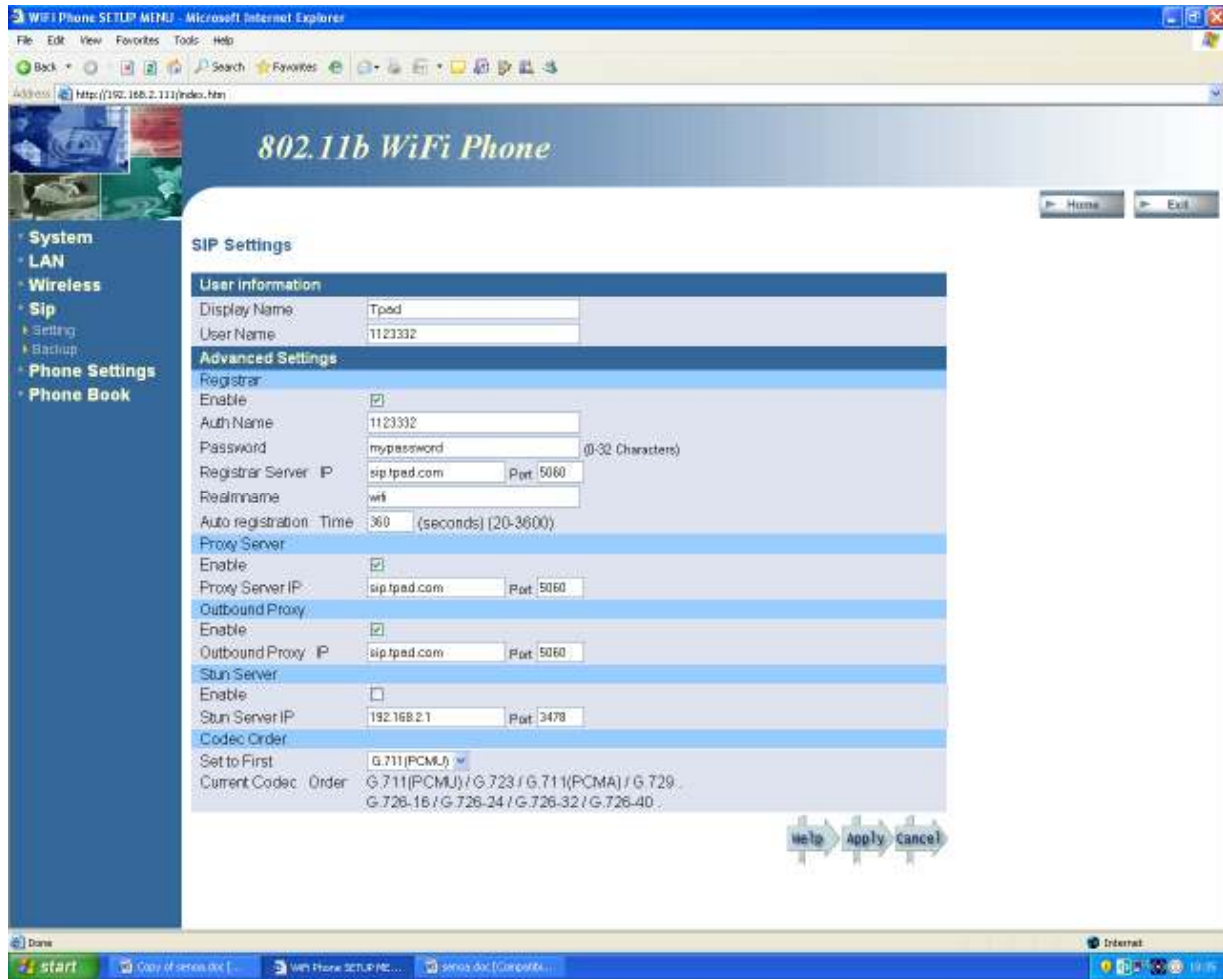
1. Open your web browser.
2. Type the IP of the Senoa phone as follows : <http://192.168.2.111> in your web browser.
The IP can be located on the Senoa phone using :

MENU > IP SETTING > CURRENT IP CONFIG > IP ADDRESS

3. The Senoa web configuration portal will then open:



4. Select SIP from the MENU and the Select SETTINGS



Enter the Settings as follows:

- > **Display name** = Tpad
- > **User Name** = Your Tpad Number e.g. 1123332
- > **Registrar**
 - > **Enable** = Yes
 - > **Auth Name** = Your Tpad Number e.g. 1123332
 - > **Password** = Your Tpad account password
 - > **Registrar Server IP** = sip.tpad.com
 - > **Port** = 5060
 - > **Realname** = The name of your WLAN
- > **Proxy Server**
 - > **Enable** = Yes
 - > **Proxy Server IP** = sip.tpad.com
 - > **Port** = 5060

- > **Outbound Proxy**
 - > **Enable** = Yes
 - > Proxy Server IP = sip.tpad.com
 - > **Port** = 5060
- > **Stun Server** (Not Required)
- > **Codec Order** (Leave as Default)

Click **Apply** and then **Exit**.

Restart your Senoa Phone and it will register with your WLAN and then with Tpad. You can now use Tpad to make calls.

Wireless Network Settings

This section provides information about accessing the WLAN Settings menu and using its features.

Press **Menu**, press the scroll keys to scroll to **WLAN Settings**.

Then press **Select** to select it. The WLAN Settings menu is displayed.

Site Survey

The Senoa wifi phone can do a WLAN site survey. You can browse the Wifi access points in your location. A list with all the APs found by the Senoa will be displayed and you can choose to join the AP of your choice.

If your WLAN access point is not displayed, you can set it up as follows:

Current Setting

SSID

Enter your WLAN SSID here. This is the name of the WLAN network e.g. MyWLAN.

Encryption

Choose the Wlan Encryption type here.

Encryption Type

Choose 64 key, 128 bit key or WPA Key

Auth. Type

Choose open system or shared key as the auth. Type depending on your Wlan.

Used WEP Key

Choose Key 1 for WEP encryption.

WEP Key Setting

Enter the WEP key for your WLAN here.

RESTART THE PHONE and it will register with your Wireless Network.