

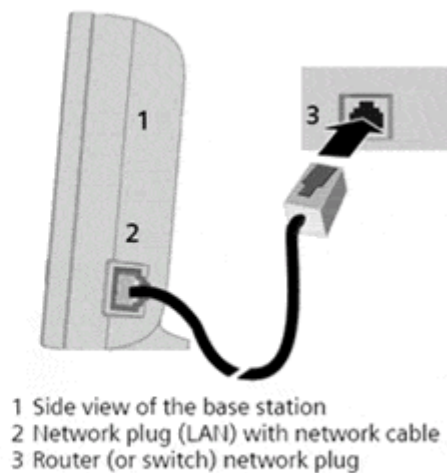
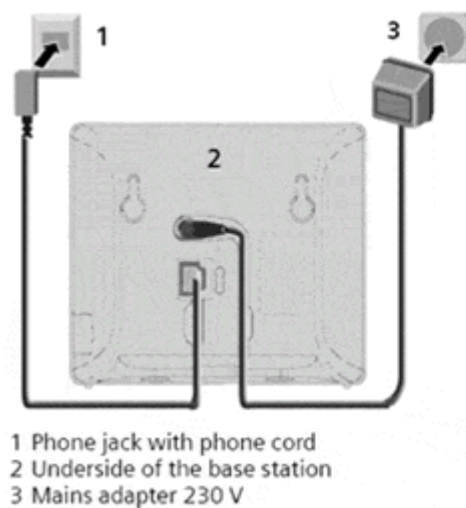
## **Siemens S450IP and C460IP Tpad Setup**

**Note:** Siemens Gigaset handset is registered with the base unit by default.

To register it again or if you are registering an additional headset with the base station, please follow the instructions on page 31 of the User Manual.

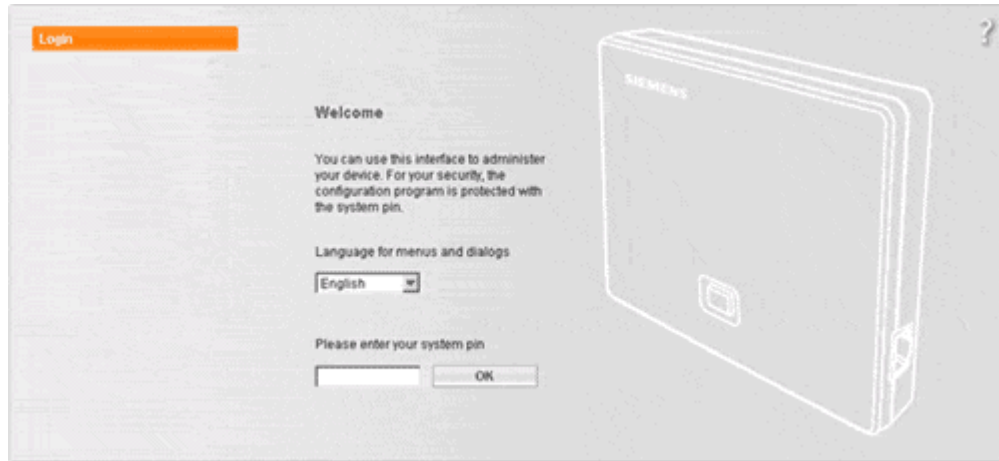
To configure the **Siemen Gigaset Handset** please follow these instructions.

1. Connect the base station's network port (on the side of the unit) to a network switch or into an ethernet port of your router.
2. Connect your handset phone line to the base station's phone port (located on the reverse side of the base station).
3. Power up the base station.



4. The base unit will pick up an IP Address from your router's DHCP server by default. To retrieve the IP address, pick up the handset and press the **menu** key. Scroll down to settings and press **OK** then scroll down to **Base** and press **OK**. Scroll down to **Local Network** and press **OK**. You will be prompted for the system PIN which is set to **0000** by default. Enter the PIN, press **OK** and scroll down to the IP address option and press **OK**. The IP address will show up on the screen of the handset.

5. Open a web browser on a PC connected on the same network and enter the IP address you retrieved in Step 4. E.g. [Http://192.168.1.2](http://192.168.1.2). You will see the login screen with a Welcome message. Enter the base PIN (**0000**) and click on the **OK** button.



## **Siemens S450IP**

Select the **Settings** tab from the top of the screen and select the **Telephony** link from the left side of the screen. You will see your connection details. Uncheck the **Active** option under the **Gigaset.net** heading and click on the **Edit** button under **IP Connection** heading to bring up the **SIP** settings.



In the SIP settings, set:

**Connection Name** to sip.tpad.com

**Authentication Name** to your Tpad phone number e.g.1123444

**Authentication password** to your Tpad account password

**Username** to your Tpad phone number e.g.1123444

Home Settings Status Log Off

IP Configuration

Telephony

Connections

Audio

Number Assignment

Dialing Plans

Directory

Advanced Settings

Messaging

Miscellaneous

SIP Connection

Connection Name or Number: sip.tpad.com

You can replace the default name with a name or the actual phone number to distinguish this connection.

Provider: Other Provider

Personal Provider Data

Authentication Name: 1123444

Authentication password: 000000

Username: 1123444

Display name:

Call Forwarding

Status:  On  Off

When:  When busy  No reply  Always

Call number:

Click on Advance settings and set:

**Domain** to sip.tpad.com

**Proxy server address** to sip.tpad.com

**Registrar** to sip.tpad.com

**Leave all other settings as default.**

General Provider Data

Domain: sip.tpad.com

Proxy server address: sip.tpad.com

Proxy server port: 5060

Registrar server: sip.tpad.com

Registrar server port: 5060

Registration refresh time: 190 sec

Network

STUN enabled:  Yes  No

STUN server:

STUN port: -3478

STUN refresh time: 240 sec

NAT refresh time: 20 sec

Outbound proxy mode:  Always  Auto  Never

Outbound proxy: nat.voiplab.org

Outbound proxy port: 5065

Scroll down to the end of page and press the **Set** button to save your settings.

You will be redirected to the status page. If all the details were entered correctly and your Internet connection is working the **IP Connection Status** should indicate **registered**. If it is not working before to change the configuration refresh the web page.



## **Siemens S460IP**

Select the **Settings** tab from the top of the screen and select the **Telephony** link from the left side of the screen. You will see your connection details. Uncheck the **Active** option under the **Gigaset.net** heading and click on the **Edit** button under **IP Connection** heading to bring up the **SIP** settings..



In the SIP settings, set:

**Authentication Name** to your Tpad phone number e.g.1123444

**Username** to your Tpad phone number

**Authentication password** to your Tpad account password

**Confirm authentication password** to your Tpad account password

**Domain** to sip.tpad.com

**Domain Name** to Tpad

**Registrar server** to sip.tpad.com

**Proxy server address** to sip.tpad.com

**Proxy server port** and **Registrar server port** to **5060**.



The screenshot shows a web interface with a navigation menu on the left containing 'Home', 'Settings', and 'Status'. The 'Settings' tab is active. Under 'Settings', there is a sub-menu with 'IP Configuration', 'Telephony', 'Connections' (highlighted in orange), 'Dialing Plans', 'Advanced Settings', and 'Miscellaneous'. The main content area is titled 'SIP' and contains the following fields:

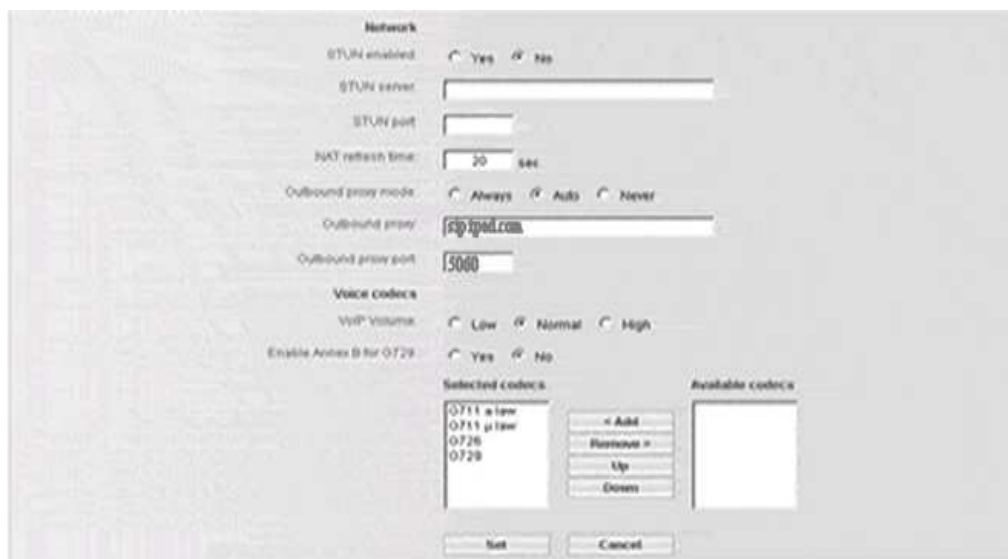
Authentication Name:	1123444
Authentication password:	*****
Confirm authentication password:	*****
Username:	1123444
Domain:	sip.tpad.com
Display name:	John
Proxy server address:	sip.tpad.com
Proxy server port:	5060
Registrar server:	sip.tpad.com
Registrar server port:	5060

In the Network section make sure that:

**Stun enabled** option is set to **No**

**Outbound proxy** to sip.tpad.com

**Outbound proxy port** to **5060**.



The screenshot shows the 'Network' configuration page. The settings are as follows:

STUN enabled:	<input type="radio"/> Yes <input checked="" type="radio"/> No
STUN server:	
STUN port:	
JKX refresh time:	20 sec
Outbound proxy mode:	<input type="radio"/> Always <input checked="" type="radio"/> Auto <input type="radio"/> Never
Outbound proxy:	sip.tpad.com
Outbound proxy port:	5060
Voice codecs:	
VoIP Volume:	<input type="radio"/> Low <input checked="" type="radio"/> Normal <input type="radio"/> High
Enable Annex B for G729:	<input type="radio"/> Yes <input checked="" type="radio"/> No

Below these settings, there are two lists: 'Selected codecs' and 'Available codecs'. The 'Selected codecs' list contains: G711 a law, G711 u law, G729, and G729. The 'Available codecs' list is empty. Between the lists are buttons: '+ Add', '- Remove', 'Up', and 'Down'. At the bottom of the page are 'Set' and 'Cancel' buttons.

Scroll down to the end of page and press the **Set** button to save your settings.

You will be redirected to the status page. If all the details were entered correctly and your Internet connection is working

the **IP Connection Status** should indicate **registered**.

